

Site Allocations Plan and Aire Valley Leeds Area Action Plan

Nature Conservation
Background Paper

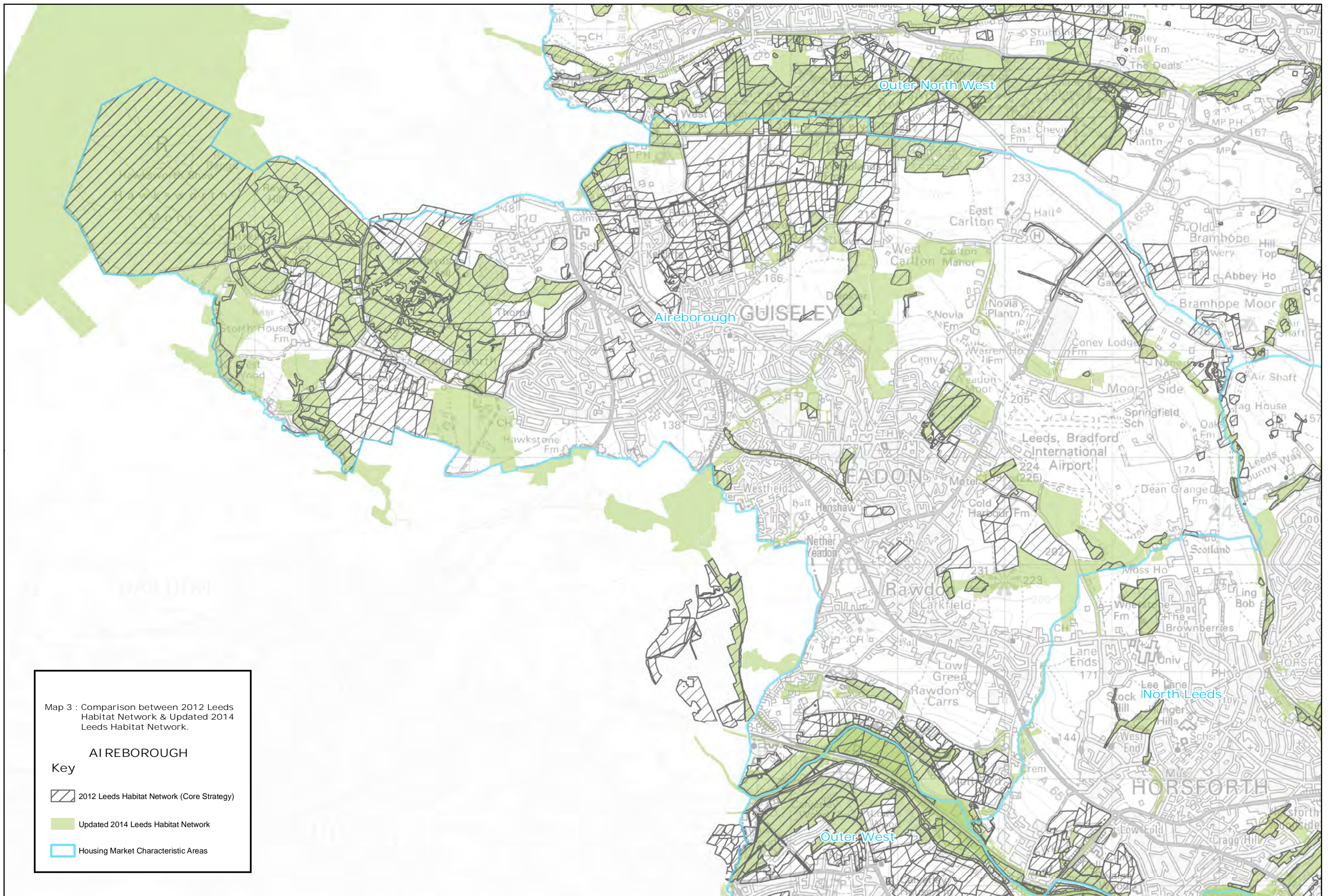
Publication Draft
Leeds Local Development Framework
Development Plan Document
September 2015



| Contents: | Page |
|--|-------------|
| 1.0 Schedule of Designated Nature Conservation Sites | |
| 1.1 Introduction | 3 |
| 1.2 Policy Background | 3 |
| 1.3 Designated International and National Sites | 4 |
| 1.4 Designated Local Sites | 4 |
| 1.4.1 New Terminology for Designated Local Sites | 5 |
| 1.4.2 Role of the West Yorkshire Local Sites Partnership | 5 |
| 1.4.3 Status of Local Sites identified in the 2006 UDP | 6 |
| 1.4.3.1 Current Status of SEGI and LNRs identified in the 2006 UDP | 6 |
| 1.4.3.2 Current Status of Leeds Nature Areas identified in the 2006 UDP | 6 |
| 1.4.4 New Local Wildlife Sites & Local Geological Sites designated since the 2006 UDP | 7 |
| 1.5 Hierarchy of Designated Sites from UDP to LDF | 8 |
| 1.6 Additional note on Policy G8 | 8 |
| | |
| 2.0 Leeds Habitat Network | |
| 2.1 Introduction | 9 |
| 2.2 Background | 9 |
| 2.3 The role of the Leeds Habitat Network | 10 |
| 2.4 How the Leeds Habitat Network has been identified | 11 |
| 2.5 How to view the Leeds Habitat Network | 12 |
| | |
| Appendices | |
| Appendix 1 - Schedule of Nature Conservation Designations from UDP 2006 Volume 2 Appendix 8 | 14 |
| Appendix 2 - Local Wildlife Sites & Local Geology Sites since UDP 2006 | 18 |
| Appendix 3 – Maps Showing Nature Conservation Designations: | |
| Appendix 3i - Map 1 Nature Conservation Designations & Leeds Habitat Network | 20 |
| Appendix 3ii - Map 2 Updated 2014 Leeds Habitat Network with broad habitat categories | 21 |
| Appendix 3iii - Map 3 Comparison between 2012 Leeds Habitat Network and Updated 2014 Leeds Habitat Network | 22 |

Appendix 3iii Maps Showing Nature Conservation Designations for the 11 Housing Market Characteristic Areas




Map 3 Comparison between 2012 Leeds Habitat Network and Updated 2014 Leeds Habitat Network

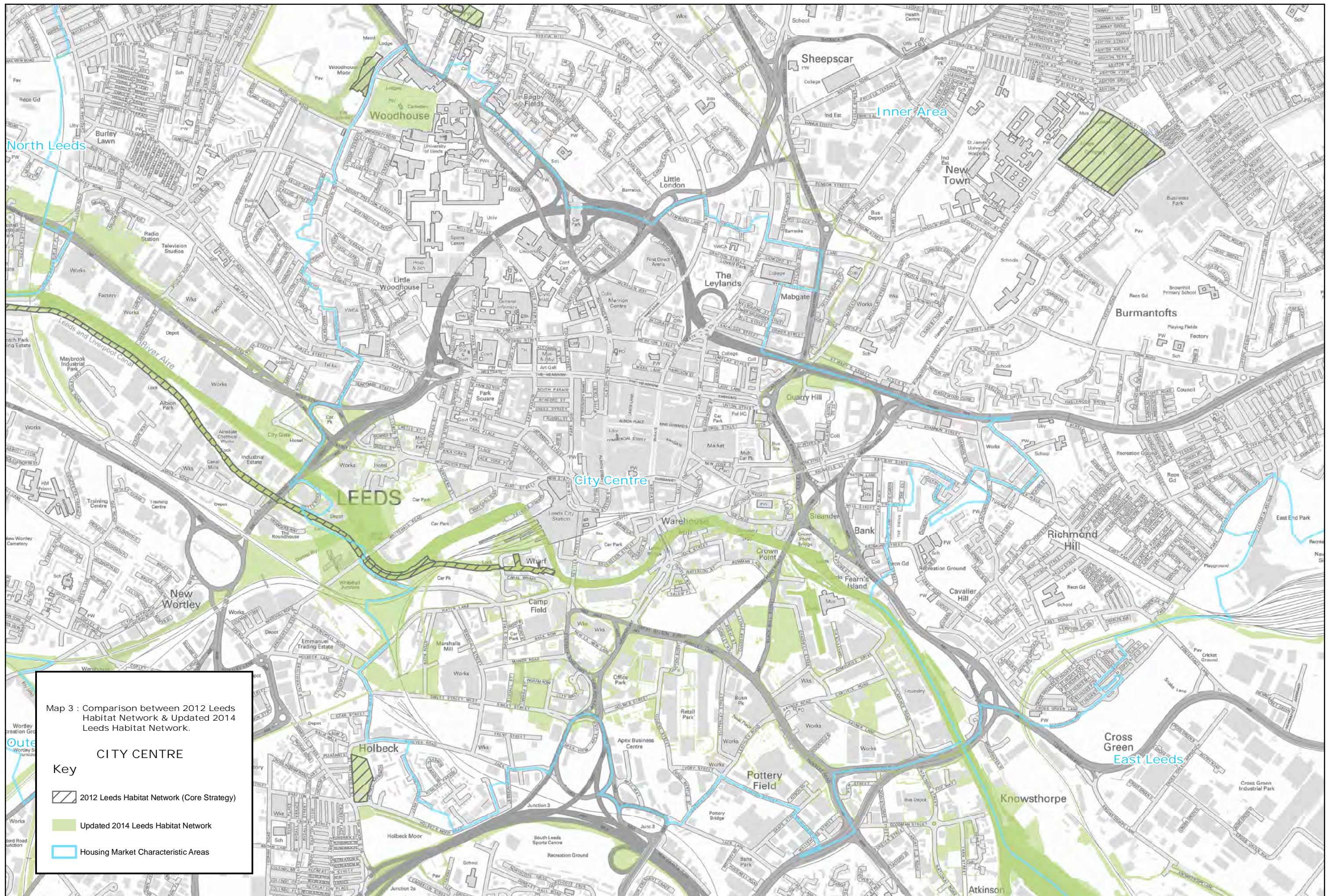


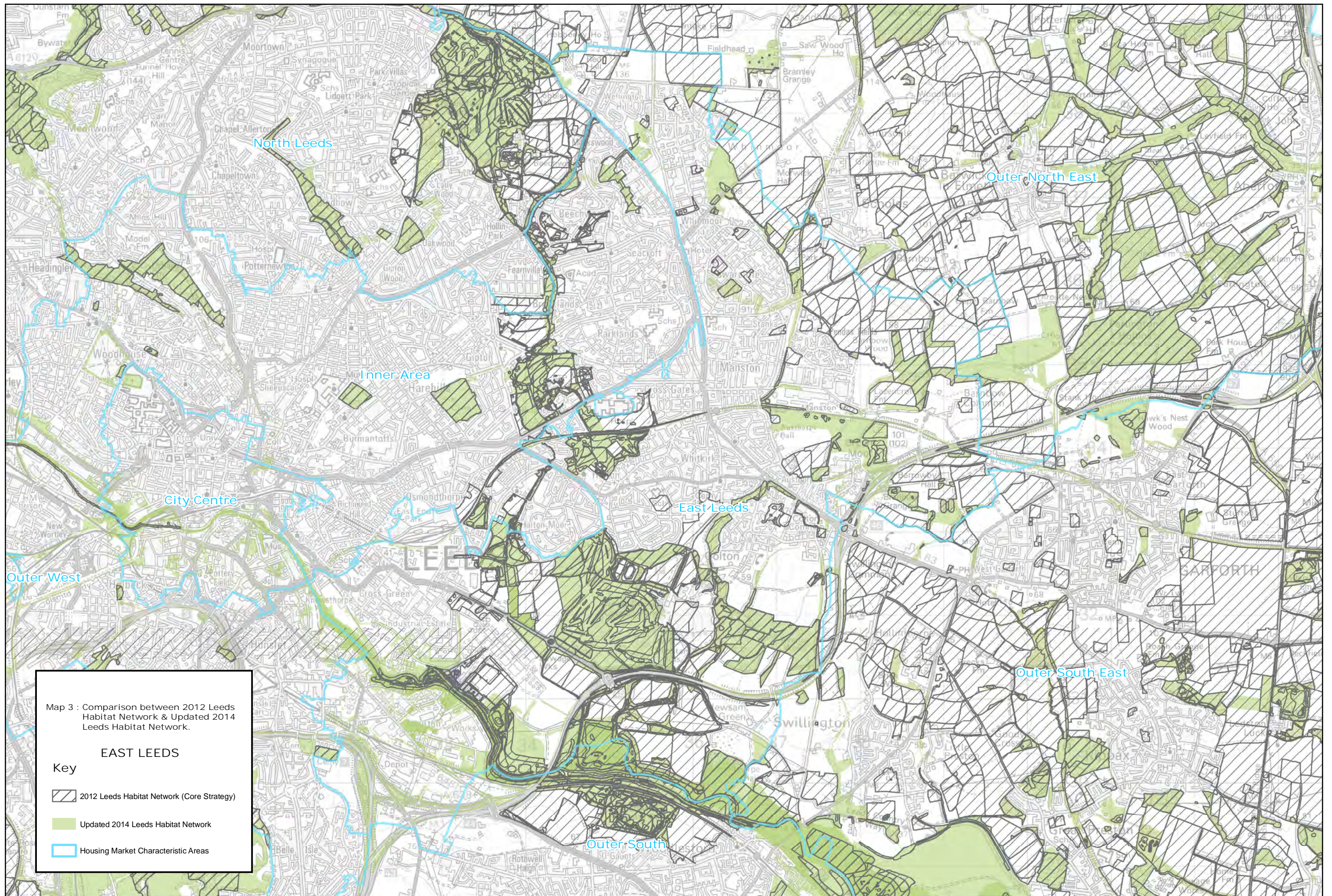
Map 3 : Comparison between 2012 Leeds Habitat Network & Updated 2014 Leeds Habitat Network.

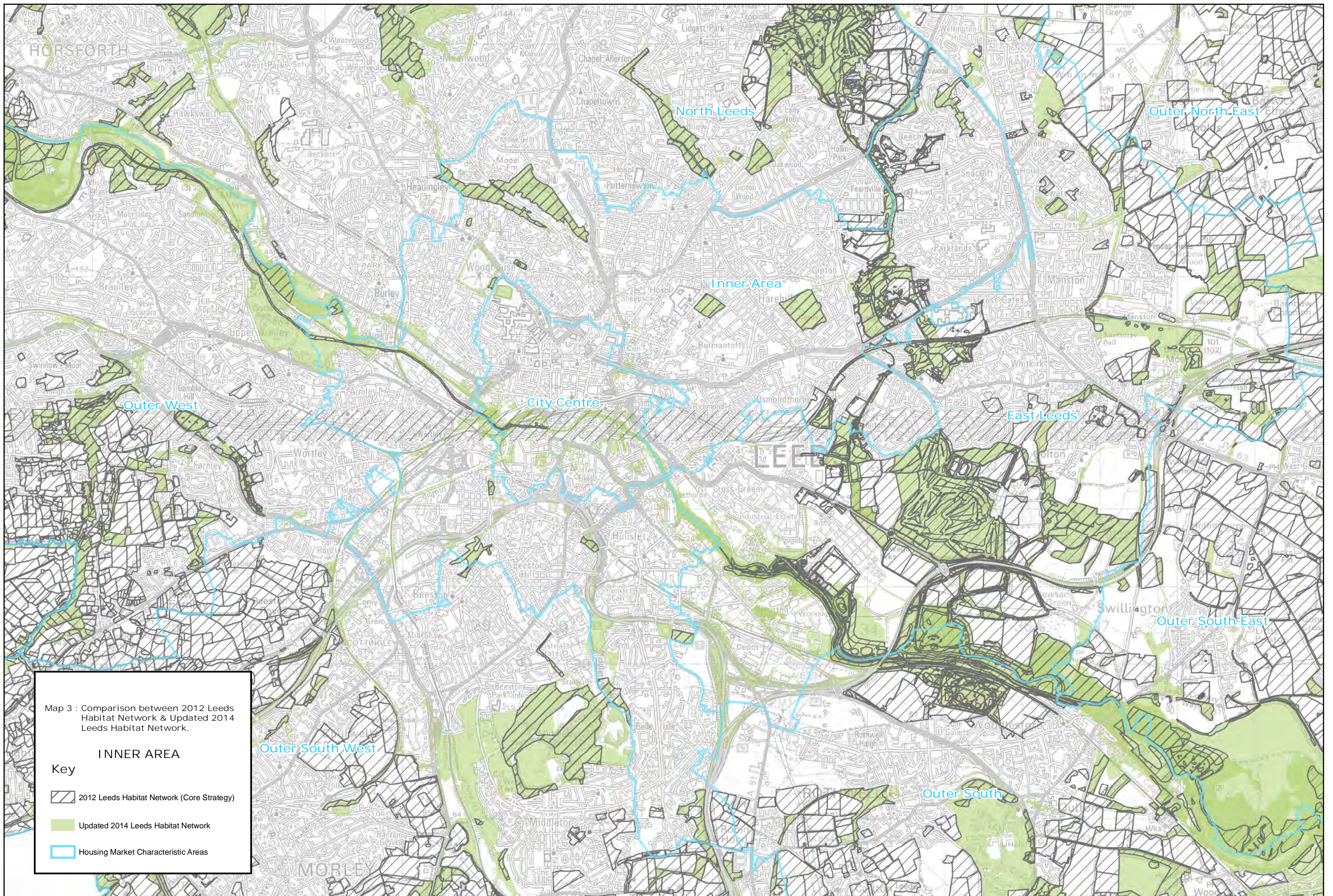
AIREBOROUGH

Key

-  2012 Leeds Habitat Network (Core Strategy)
-  Updated 2014 Leeds Habitat Network
-  Housing Market Characteristic Areas










Map 3 : Comparison between 2012 Leeds Habitat Network & Updated 2014 Leeds Habitat Network.

INNER AREA

Key

-  2012 Leeds Habitat Network (Core Strategy)
-  Updated 2014 Leeds Habitat Network
-  Housing Market Characteristic Areas

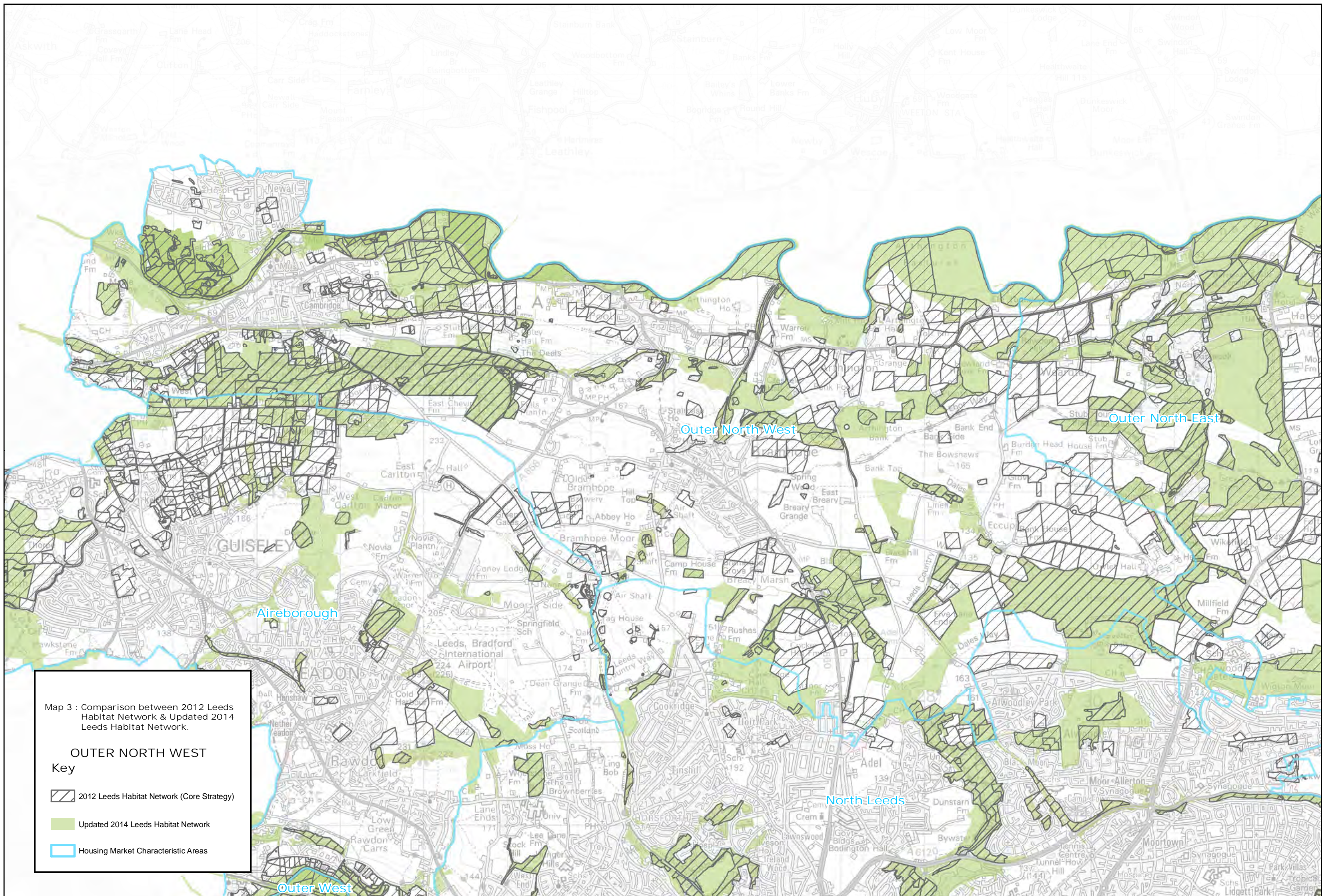
Outer South West

Outer South








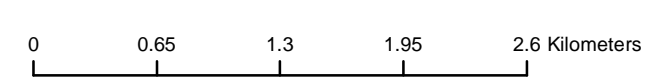




Map 3 : Comparison between 2012 Leeds Habitat Network & Updated 2014 Leeds Habitat Network.

OUTER NORTH WEST
Key

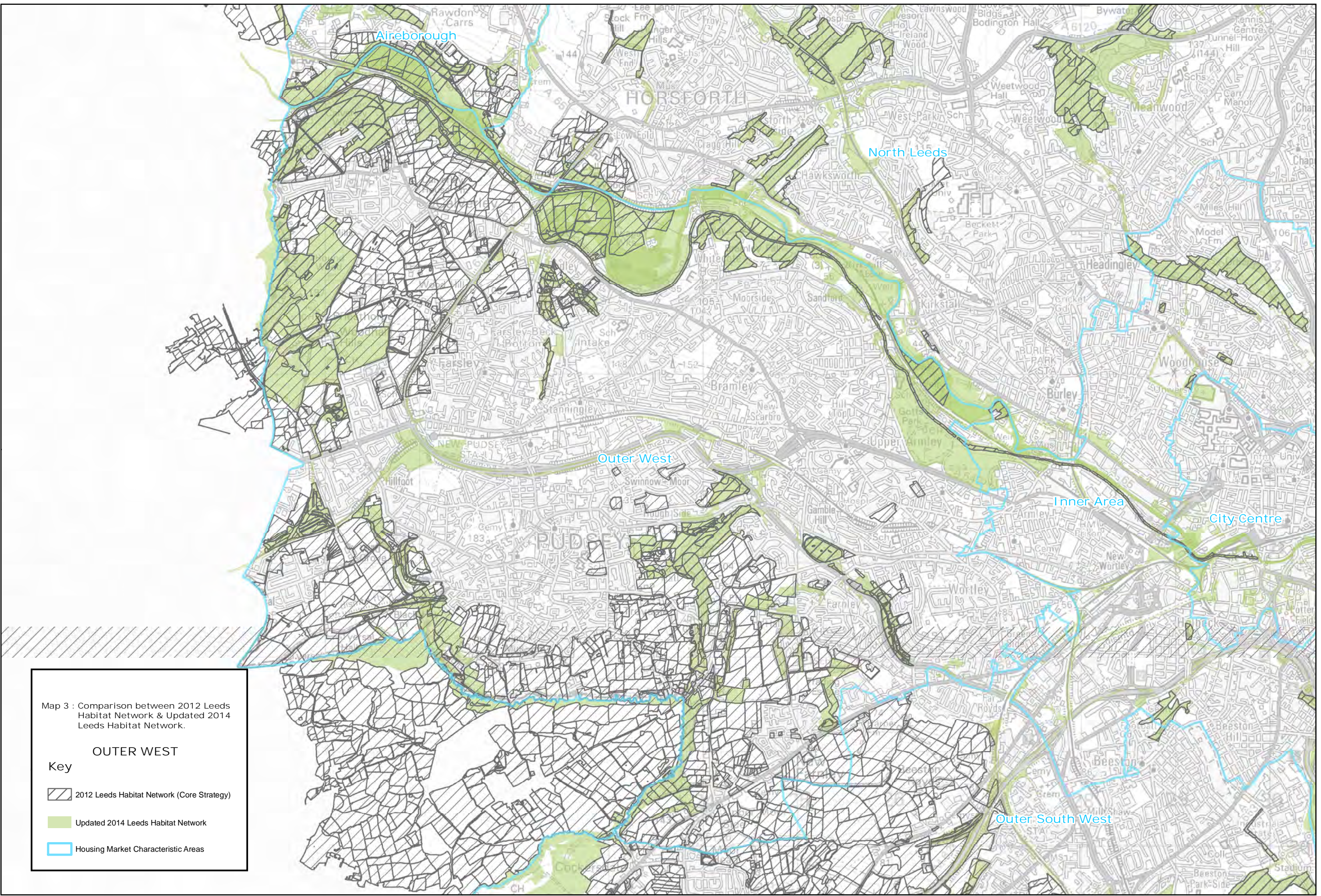
-  2012 Leeds Habitat Network (Core Strategy)
-  Updated 2014 Leeds Habitat Network
-  Housing Market Characteristic Areas











Map 3 : Comparison between 2012 Leeds Habitat Network & Updated 2014 Leeds Habitat Network.

OUTER WEST

Key

-  2012 Leeds Habitat Network (Core Strategy)
-  Updated 2014 Leeds Habitat Network
-  Housing Market Characteristic Areas

For more information, please contact:

LDF Publication Draft Consultation
Forward Planning & Implementation
The Leonardo Building
2 Rossington Street
Leeds LS2 8HD

Email:

Site Allocations: sap@leeds.gov.uk
Aire Valley Leeds AAP: avlaap@leeds.gov.uk

Web: www.leeds.gov.uk/yourcity



**Site Allocations Plan and Aire Valley Leeds Area Action Plan
Environmental Designations Background Paper
Publication Draft**

Leeds Local Development Framework
Development Plan Document

September 2015